

Vince **ALUMINUM AWNING MANUFACTURING**

Est. 1969



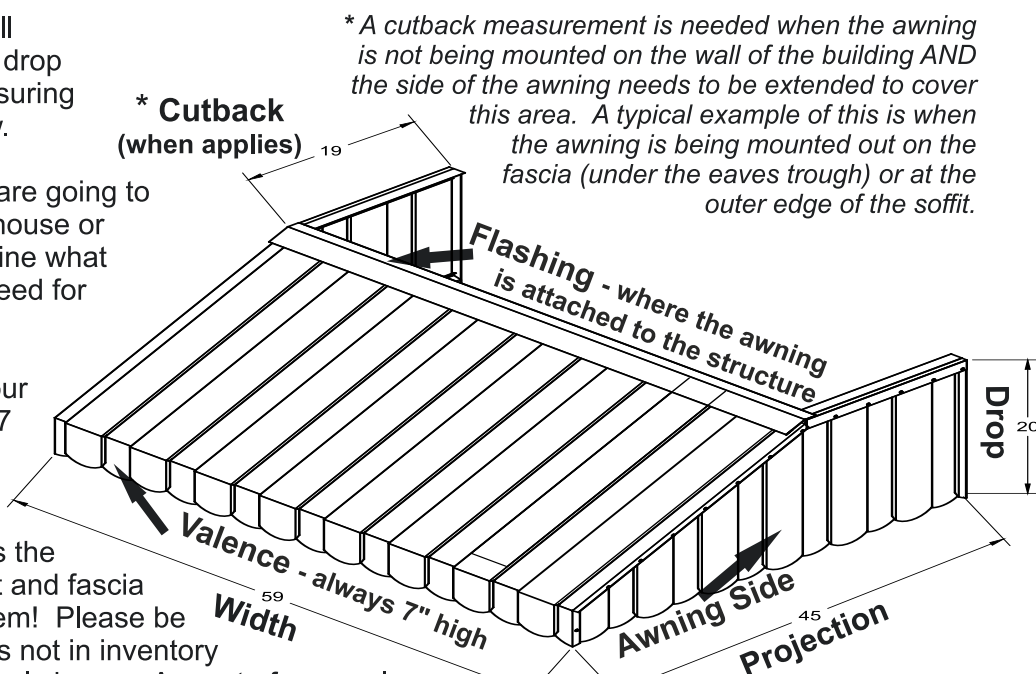
How to Measure and Order an Awning

Step 1: Decide what size awning you need. You will need to decide the width, drop and projection. See measuring tips to the right and below.

Step 2: Decide how you are going to mount the awning to the house or building. This will determine what type of flashing you will need for your awning.

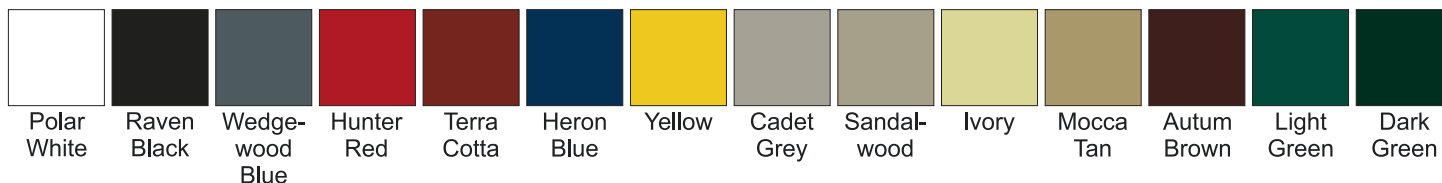
Step 3: Decide what colour you would like. We offer 7 standard awning colours plus any Gentek colour. Some customers like to match their awning so it is the same colour as their soffit and fascia on their house. No problem! Please be aware that custom colours not in inventory may have a small additional charge. As part of your colour decision you can add accents to your awning. Accents are coloured stripes. Coloured stripes can alternate (like on the page to the right) or simply be 1 or two stripes at each end of the awning and in the middle if you so desire.

Step 4: Determine if your awning needs support posts, scrolled columns, braces, additional framing or structural support beams. No need to worry too much about getting these details perfect. Just tell us where you think you would like posts and supporting frames. Details like the pitch of the awning make a difference here. The less slope the awning has the more load ice and snow will have on the awning. We will never process an awning order without doing some calculations and advising you on the structural support of the awning so just fill in what you can here and we will take care of the rest!



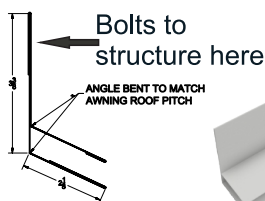
Standard Colours - Awning made from these colours have pans 0.0024" thick.

All Gentek colour available upon request - Pans 0.0021" thick. Extra charges may apply.

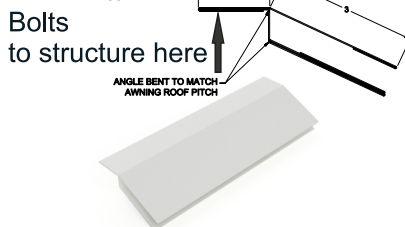


What Type of Flashing do You Need?

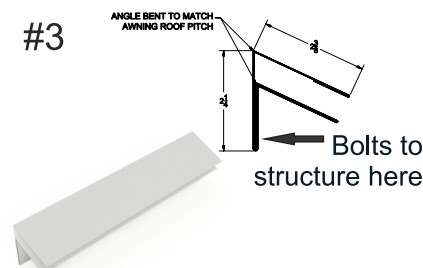
#1



#2



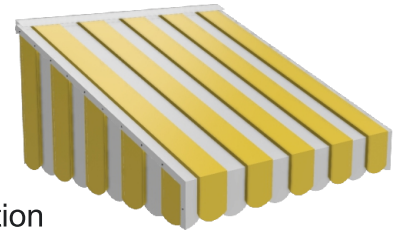
#3



An Awning For All Places

Standard Door Awning

This is our most popular awning. It's principle function is to cover the door area and users from rain, ice and snow plus shield the door and area inside from sun and harmful UV rays. This awning simply mounts on the wall above the door and doesn't usually require any posts or bracing. A typical size is 48"wide x 24" drop x 42" projection



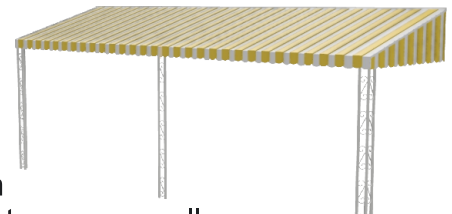
Standard Window Awning

This is our second most popular awning. It's principle function is to shield area inside the window from sun and harmful UV rays. It saves on air conditioning costs and protects carpets and furniture from UV damage. This awning can mount on the wall, soffit or fascia depending on the location and house architecture.



Front Porch Awning with Scrolled Columns

Many houses built between 1950 to 1980 had a front porch sitting area as an architectural feature. Families and communities spent their leisure time in their front yards and on their front porches. This tradition is still alive and well and we still sell many front porch awnings. They provide cover from rain, sun and shield the entrance as well..



Back Patio Awning with standard support posts

Whether your house was built 100 years, or 1 year, ago all house designs can accommodate a back yard covered porch. The family will always migrate to the back yard for quiet and privacy. This awning can cover a small sitting area or the entire back of the house. Each one is custom designed and manufactured. We are known for our big awnings!



Gable Awning

This awning design has been around for many years but we have finally perfected the design, so we are comfortable advertising it! We finally got the recessed gable end and trim details just right. It is a real eye catcher on the front or back of a house. Installing it does require some skill and experience...plus a couple extra set of hands. .



Step Front Awning

When you want to cover the front porch and stairs there is really no other option. This awning is popular for people who really cannot have icy, snow covered or wet front steps. It can be quite dangerous for some people. Each of these awning are custom sized and will require support posts at the bottom of your stairs.



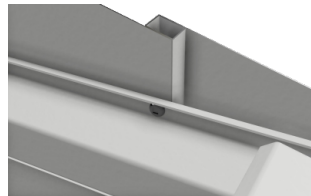
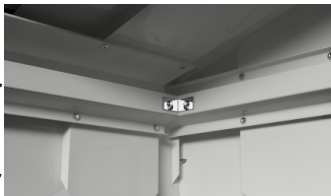
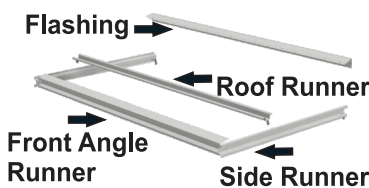
Railings and Awning Support Posts

We offer a wide selection of colours and styles when it comes to railings when they are sold with awnings. To properly integrate your awning and railing they should be installed together. Doing this will allow you to use extended railing posts to support the awning. Typical awning support posts range from 1" x 1" to 3" x 3" square. With railing they posts start at 2 1/2" x 2 1/2" and range up to 4" x 4". The posts can connect to the awning frame and support beams to provide maximum structural support from snow and ice loading as well as uplift protection from strong uplift winds during a storm.



How an Awning is Designed and Manufactured

An aluminum awning is made from many roll formed pans that are assembled on a large layout table and secured together by screwing them to a frame using stainless steel screws. The pan design allows the awning to be screwed to the structural frame in a way that the screws are not visible from the exterior of the awning and the awning itself is structurally sound and waterproof. Each awning has 1 front angle runner, 1 side runner and 1 flashing. The size of the awning will determine how many roof runners are required. The size will also determine if structural support beams are required.



Do it yourself or hire a local contractor

Check our recommended contractor list in your area



We ship custom sized and assembled units anywhere in Canada. In most cases, after unpacking you can be ready to mount the awning on the wall in less than 15 minutes! Video assembly and installation instructions are available on line. 8am - 8pm installation phone support is available for all time zones in Canada.

Same Address for over 40 Years!

Contact Us

1051 North service Road East, Oakville Ontario, Canada L6H 1A6

Phone: 647 803-2708 Fax: 289 351- 1534 Email: sales@vinceawnings.com

www.vinceawnings.com

Your Authorized Dealer: